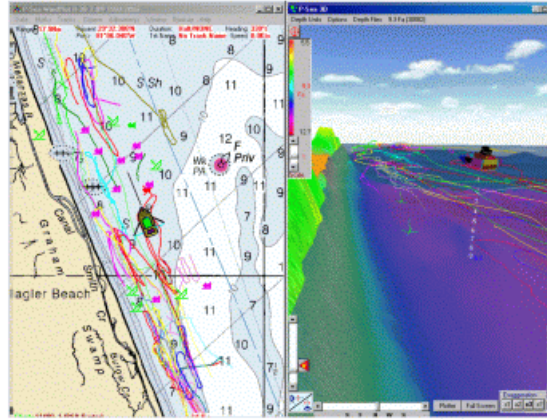


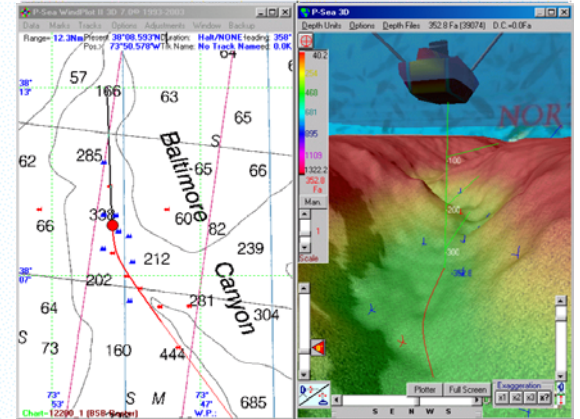
P-Sea 3D SeaBed Options



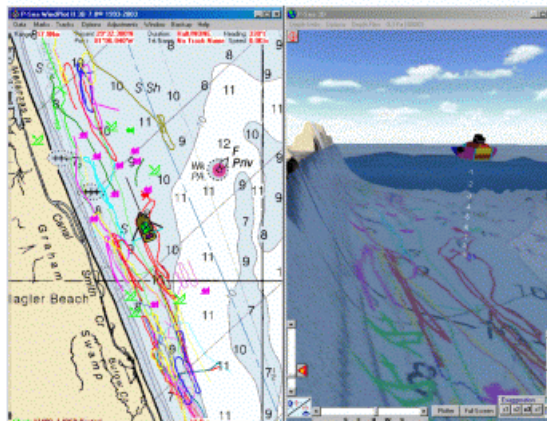
P-Sea WindPlot II 3D Seabed option adds a whole new dimension to the already popular P-Sea WindPlot program. See bathy. or BSB charts reshaped to contour to the bottom, or turn the bottom into a set of colors to indicate depths. See marks and tracks laid over this 3D bottom contour. Watch the vessel move across the bottom so you can precisely move between rocks, valleys and canyons. Use the 3D P-SeaBed Builder to update the existing bottom database, or generate totally new bottom profiles. P-Sea 3D shows a 3D image of a vessel on a transparent water plane. A depth ruler is drawn from vessel to bottom that is divided up into numbers to show the precise depth at any level. A demo is available to WindPlot II users that will test the 3D compatibility with their present computer. New HD areas now available too. See red outlines on the maps of the 3D regions on opposite side of this page



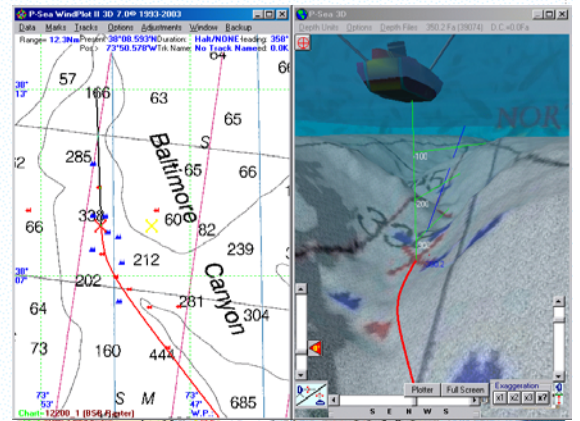
This picture shows a BSB chart on left and a top view of the 3D set to colored depths on the right. Tracks and marks are drawn on the surface of the water. Water transparency can be adjusted to suit the user.



This picture shows a BSB chart on left and below water 3D view of the bottom on the right. The depth of the sea bottom changes with color in relation with the color bar. Depth indicator lines protrude outward in the direction of boat indicating depth ahead of the vessel.



This picture is the same as the one above except the chart is contoured to the bottom instead of colored depths. Tracks and marks are copied to it too.

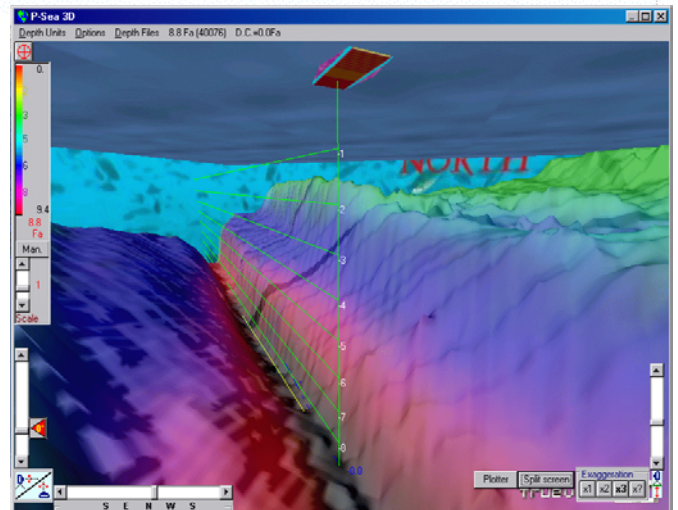


This picture is the same as the one above except the chart is contoured to the bottom instead of colored depths.

P-Sea WindPlot II 3D & P-SeaBed Builder Requirements:

- *P-Sea WindPlot II 3D Version 7.+ (w/P-Sea or Navionics security key)
- *Windows 98SE , ME, 2000pro,XP, Vista or Windows 7
- *DirectX 8.1 (Update supplied on install CD if needed)
- *3 Gig RAM
- *Pentium 4 or Duo-Core processor (or equivalent)
- *GeForce 4 Video graphics card (or equivalent)
- Note:** standard video card will work but may be too slow.
- WindPlot II users can ask for 3D demo disk to test if their current computer is fast enough.
- *Activation Code # for P-Sea WindPlot II 3D (required for P-SeaBed Builder)
- *Activation Code # for 3D P-SeaBed Builder
- Note:** P-SeaBed Builder is used to make your own 3D Seabed & requires interface to depth sounder; P-SeaBed Builder is **NOT** included with P-Sea WindPlot II 3D.

A 3D regional chart with HD charts on DVD is included with the purchase of the P-Sea WindPlot II 3D Option . It requires the install of the P-Sea WindPlot II 3D program; then just a code number activates the 3D option.



P-Sea WindPlot II 3D in full screen mode