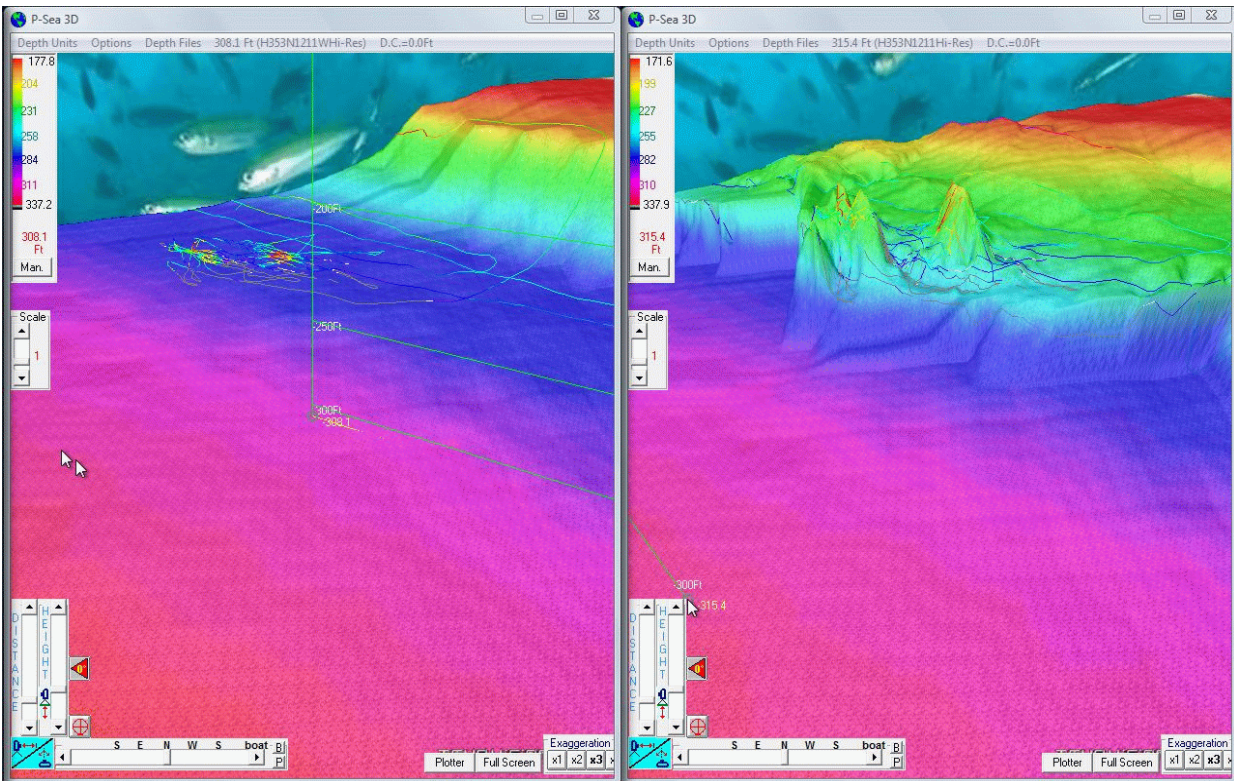




P-Sea BedBuilder Option

Before

After



The 3D data provided by P-Sea Software Company's 3D uses a variety soundings from NOAA side scan sonar, track lines and spot soundings. Gaps in areas where no data was available has been filled in by the computer using the existing data as baselines. Above picture on the left is an example of the supplied 3D region chart. The right picture has been updated using a P-Sea WindPlot track lines that had a depth sounder supplying the depth information for the tracks. It is clear to see that the picture on the right is showing a significant pile of rocks that doesn't appear on the left. This is a mile square area that took about 2 hours of cruising to update. You can see the track lines on both 3D areas that were used to update the right picture.

It also should be noted that we used the aid of the Koden Black box and P-Sea FishFinder option to locate this area by identifying the hardness of the bottom first. Once we notice the area of harder bottom we kept circling until we were able to get enough tracks to produce the picture right above.

In the future, the P-Sea BedBuilder will update the bottom as you go but at this time, the 3D P-Sea BedBuilder updates the bottom only when instructed to by the operator.