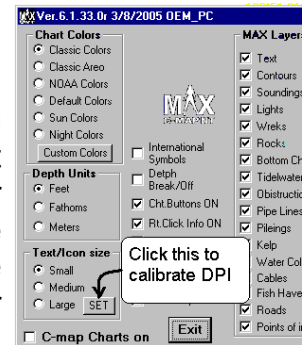


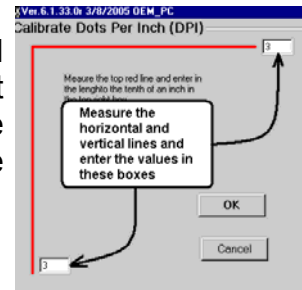
Using C-Map Charts in P-Sea WindPlot MAX

First Time Screen Calibration

Make sure C-Map charts are on by checking the “C-MAP CHARTS ON” check box located to the left of the exit button. The first time you turn on C-Map Charts you will usually be asked to calibrate the chart to your monitor by measuring a vertical and horizontal line and enter these measured values. This sets the dots per inch (DPI) so that the printing on the charts are the proper size. You can re-calibrate the DPI at any time by clicking the “SET” button in the C-Map Vector chart window as show here to the right.

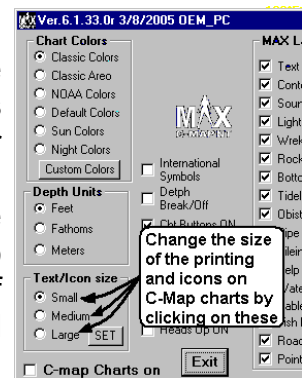


Simply take a tape measure and measure length in inches of the red vertical and horizontal lines. Then enter these lengths to the nearest tenth of an inch. This can also be used to change the size of the printing on the C-Map charts. Make the numbers smaller to make printing bigger.



Changing size of chart fonts and icons

C-Map provides three set sizes for the printing on the chart an for the size of the icons of SMALL, MEDIUM and LARGE. The default is SMALL. Please note that the C-Map charts have a anti-clutter filter built in that prevents most printing and icons from over-lapping each other as you zoom out. So this means that less information will be displayed the larger you make the printing as the anti-clutter had to turn objects off in order to keep them from overlapping. You can of course zoom down to lower scales to see the data that is removed when the larger print is selected.



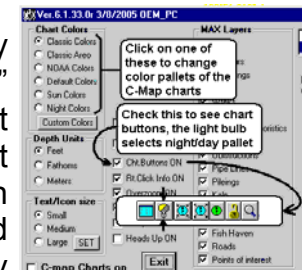
Depth Units

C-Map charts can display spot soundings, depth contours and land elevations. You can change the unit of measure for these between Feet, Fathoms and Meters by clicking on the appropriate option in the C-Map charts setup window shown here to the right. The chart in the background will update each time you make a new selection of the measurement units.



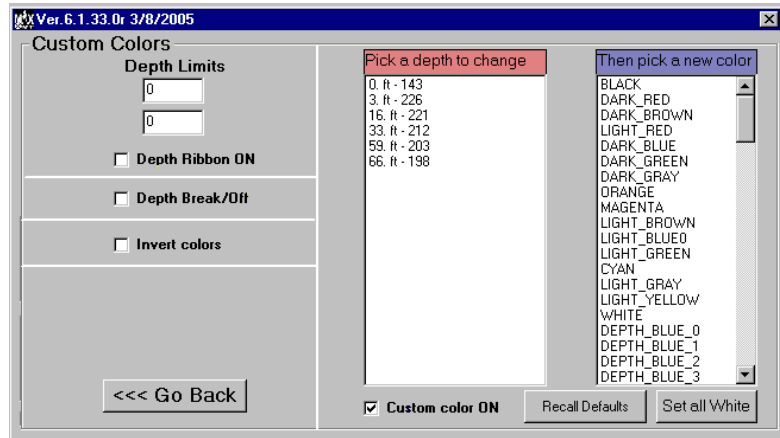
Chart Colors

C-Map provides for 6 different chart color pallets. Simply click on any one to see what the chart color pallets are like. Use “Night Colors” when you want the computer monitor darker like at night. The default is “Classic Colors”. If you turn the chart buttons on, a series of chart related buttons will appear in the lower-left of the plotter screen when you touch the mouse arrow on the left of the screen. The second button that looks like a light bulb will alternate between one of the day color pallets and the night pallet.

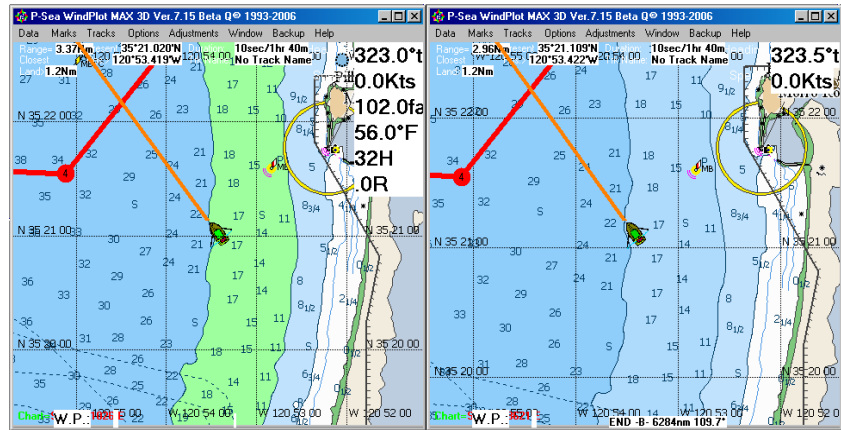


Custom Chart Colors

The custom chart color mode allows you to modify the colors associated with depth contours only. Please note that these colors are only applied at lower chart levels and only in detailed chart areas that appear at lower ranges. They will not work when you're too far off shore



You can highlight a depth range by simply entering the upper and lower limits in the white boxes below the words "DEPTH LIMITS" and put a check mark in the "DEPTH RIBBON ON" check box.



You can set it to highlight a depth range by entering a maximum and minimum depth or you can actually set a color for each depth contour. Use the right side of the custom color window for this purpose. The left column has a list of most all of the depth contours with it's associated color. To change a color for any contour, first click on the contour in the left list then click on a color from the right list. These colors will be applied when you place a check mark in the "CUSTOM COLOR ON" check box and when the proper chart scale is selected. Two buttons have been provided to aid in the setup of the custom colors; SET ALL WHITE will change all colors to white and the RECALL DEFAULTS will bring back the original colors as they appear when this function is turned off.

If you click the "DEPTH BREAK ON" check box you will be asked for a value of depth to enter. Enter zero for no depth break or enter the depth you want the break to be at. If you enter 20 fathoms for example, the color of the depth will be white after that value and colored before that value. Please note this works only on chart levels D or less.

U

The INVERT COLORS check box will set the contour colors spanning the opposite direction, dark to light and light to dark. You must restart the program to see these changes. The default is unchecked.

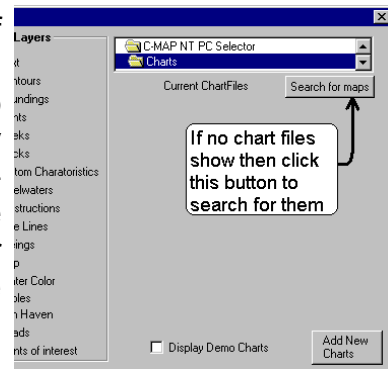
C-Map Card Reader

If you are using the C-Map Card Reader there should be one chart that list on the right side of the C-Map Setup window. It should match the name on the C-card. The card reader must be plugged in the computer BEFORE starting the P-Sea WindPlot MAX program. The

light on the card reader will turn red at first and then should turn green when WindPlot MAX is started indicating that the chart has been found and loaded from the C-card. If this does not happen, quit the P-Sea WindPlot MAX program, unplug the card reader. Reinstall the card reader software, plug the card reader back in and start P-Sea WindPlot MAX again. If you do not have the card reader software then call P-Sea Software Co. to obtain a copy or download it from the web; www.p-sea.com/win_xp.htm.

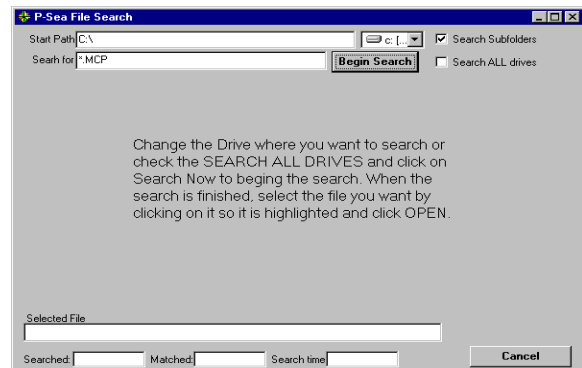
C-Map Chart List

After installing charts they should be listed in the right side of the C-Map setup window. You can install many chart files and they should all show in this list. If not then they won't show up in the P-Sea WindPlot program. Further proof can be found by checking the "BOUNDARIES ON" check box found on the C-Map Setup window. The zoom out at the location where the charts should be by either entering in a range of 500 miles or click the right-most yellow arrow button located under the RANGE button in the upper-left of the plotter window.



If you can't find the chart either in the list or on screen

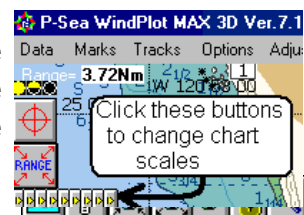
then you can try and find the files by clicking the "SEARCH FOR FILES" button show here on the right. Then click the "BEGIN SEARCH" to look for the C-Map chart files. They have an MCP file extension, any file with this extension will be listed. If more than one show then click on one an then click the EXIT. You're charts should now be listed. If you still don't find them then check the "SEARCH ALL DRIVE" in the search window and see if you can find them that way.



Navigating with C-Map charts in P-Sea WindPlot MAX

C-Map charts will display automatically if the following is true: **1)** You have C-Map charts turned on and **2)** You have positioned either the ship's icon or cursor in the location where the charts are located. C-Map charts are turned on by clicking on the "WINDOW" menu then select "CARTOGRAPHY" then "C-MAP VECTOR CHARTS" and check the "C-MAP CHARTS ON" check box. Then if you have a GPS connected with the "*" flashing up by the right of the HELP menu (indicating you have position) and the C-Map chart pack you picked is of the area your in then the chart should just appear now. If your not in the area of the chart coverage then you can turn on the cursor (press F2) and place the yellow bull's-eye in the area where the chart is by entering a large range (press F4) of about 2000 miles and drag the cursor to the area where the charts are or should be. Then zoom in by changing the range (press F4) of 10 or so miles. If you need to pan right or left then simply drag the yellow bulls-eye off of the screen and let go. It should then pan in that direction.

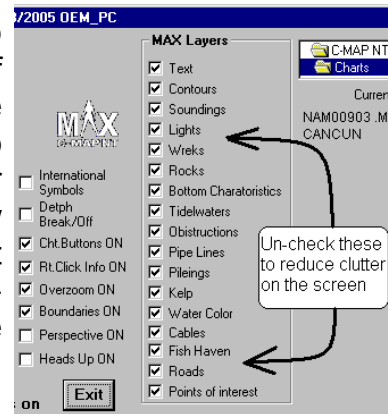
There are several ways to change the range/scale of the charts. The range of the current chart is displayed in the upper-left and the scale and chart level is displayed in the lower-left. **1)** Enter a range directly by pressing **F4** and enter a range in nautical miles. **2)** Use the scale buttons located under the range button in the upper right. They look like a bunch of yellow arrows shown to the right here.



3) A set of zoom in/out buttons will appear in the lower-left when the mouse arrow touches the left side of the screen (if “Chart buttons visible is checked in the C-Map setup window). The third button that is suppose to look like a blue world with arrows pointing in towards it zooms in when clicked. The fourth button with arrows pointing out zooms out when clicked. (The first button calls the C-map setup window, the second alternates between day and night colors, the 5th button zooms to the world chart, the 6th button locks the current chart level and the last searches for other kinds of charts.) **4)** You can press the **PgUp** and **PgDn** buttons on the computer’s keyboard to zoom in and out like the buttons do in #3 above.

Removing Chart Clutter or Layers

C-Map charts are Vector type, that is the data that makes up the charts are simply made of points and objects. Because of this you can remove any of these points or objects of the charts that you may not need. In doing so you can clear up the chart so that you can see the marks, tracks and other more important information better. The C-Map Setup window has a series of check boxes in the “MAX LAYERS” area that remove items when unchecked. Each time you check or uncheck one the chart behind the window updates to show the changes.



International symbols

There are two styles for chart icons in C-Map charts, international and US. A check box called “INTERNATIONAL SYMBOLS” is provided for switch to one or the other. You can find it above the EXIT button in the C-Map setup window.

Always Use CM (C-Map) World Charts

When this option is checked, you will be asked at what range you want the C-Map world chart to appear. Then, anytime the WindPlot is set for a range higher than the maximum world value, the C-Map World chart will appear even if your using bathy or BSB navigational charts.

Right-Click chart info

If you have the check box “RT.CLICK INFO ON” then a dialog box will appear anytime you place the mouse arrow over an object like a buoy and click the right mouse button. This info box will contain important information pertaining to the object you right-clicked on. Please note that when this is checked, the make mark with right mouse button is disabled.

Overzoom

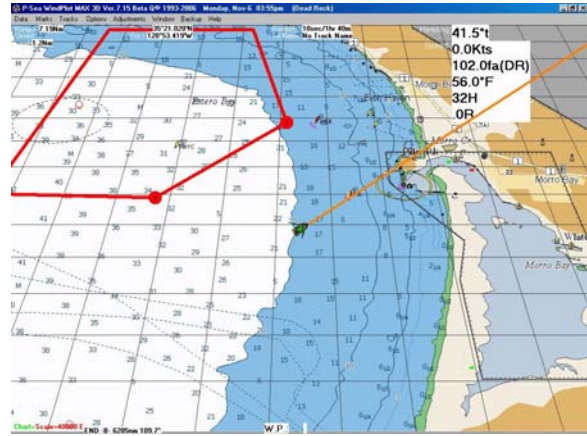
For the most part this just should always be checked otherwise it limits the ranges that the charts will work on. Just make sure the “OVERZOOM ON” is checked in the C-Map Setup window.

Boundaries On

Even though you only may have purchased on chart there it will consist of may different charts. Each chart can be shown by outlining it in a chart boundary. To do this just check the “BOUNDARIES ON” check box. Then the chart outlines will appear when zoomed out. The smaller the outline the more detailed the chart will be.

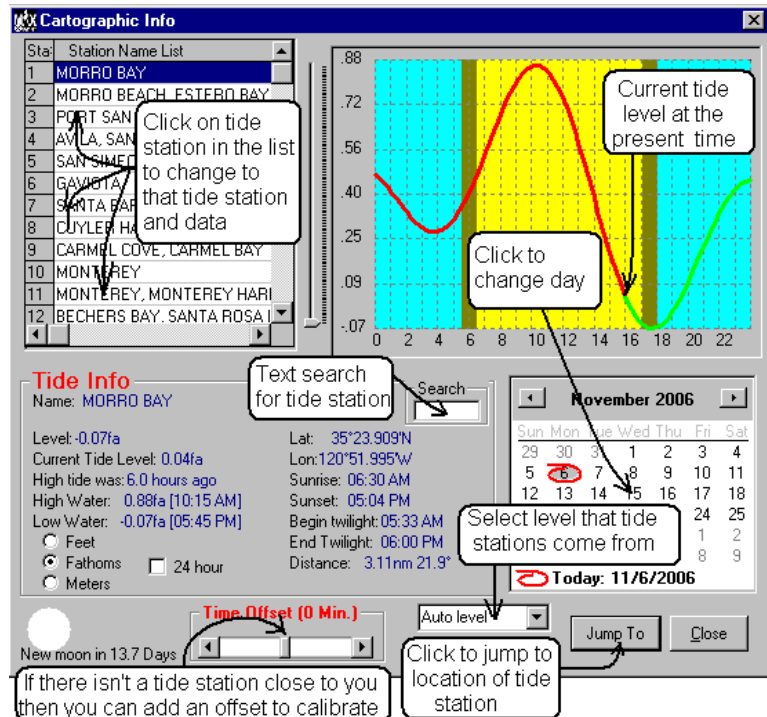
Perspective Mode

A new entertaining chart mode had been introduced by C-Map in their MAX line of charts that is called a Perspective view. When checked the charts will appear as shown in the example to the right here that kind of gives a bird's-eye view of the chart. Over and under zoom does not work in the perspective mode so ranges are very limited.



Tides

C-Map charts have the tide stations built into the chart. Each tide station is denoted by a **T** in a white box. If you have the "RT. CLICK INFO ON" checked in the C-Map Setup window then right-clicking on the chart will give you info about it and if you right-click on the **T** on the chart then the **TIDE WINDOW** will appear shown here. It can also be called by going to the "OPTIONS" menu and clicking on "TIDE FORECASTER". This way will also give a list of all tide station on the current chart level. You can change the level by selecting a different level from the drop-down box on the bottom of the tide window.



In the **TIDE INFO** section, the **LEVEL** is the of tide at the current position of the scroll arrow located along the left side of the tide graph. You can change this level just by moving the mouse arrow up and down the graph. The **CURRENT LEVEL** is the tide level a the current time. The **HIGH WATER** and **LOW WATER** gives the high and low points of time for the day. The tide unit of measure can be changed by clicking on either "**FEET**", "**FATHOMS**" or "**METERS**" options. The **Lat/Long** is the position of the selected tide station. Then the times of sunrise, set and twilight is given for the current date. The time format can be changed between 12 and 24 by checking the **24 HOUR** check box. The **DISTANCE** is the distance from where the ship's position is in relation to the selected tide station.

The graph in the upper-right shows the tide for a 24 hour period. The line changes from red to green at the current time of day. It comes up with the tide for the current date that the computer is set for. If this is the wrong day then set you computer to the proper day. If you wish to see the tide for a **different day** then just use the calendar in the lower-right to find the date you want and click on it to change to that date.

Select different tide stations by clicking on them in the list. If you know the name of the tide station then enter it in the “SEARCH” box and the list will update showing all stations that match your search text.

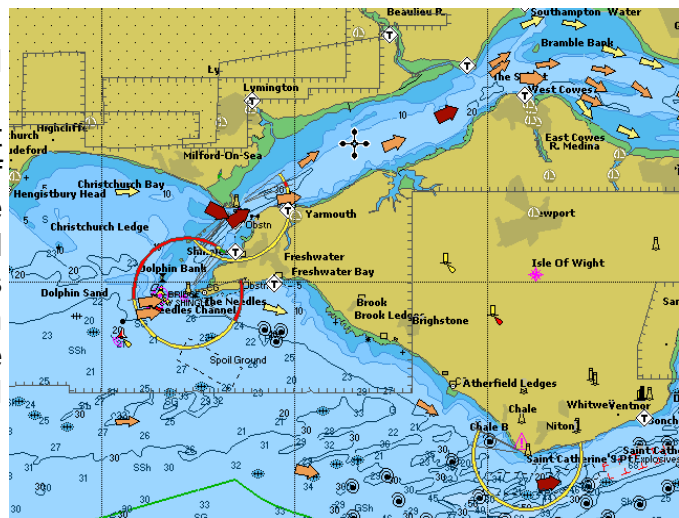
Jump to the location of the selected tide station on the C-Map chart by clicking the “JUMP TO” button.

If there is no tide station close to where your at or the tide prediction is a little off time wise then you can compensate by changing the “TIME OFFSET” scroll bar located at the bottom of the window until the tide is correct.

Phase of the moon is displayed in the lower-left of the tide window. This display’s the current moon phase both graphically and by the number of days until either a full or new moon.

Currents

Tidal streams represent the speed and orientation of the water stream (flow). During the map redraw C-Map MAX chart calculates the speed and orientation of each tidal stream object present on the map and display them as arrows. Tidal streams speed and orientation depends on current date and time (taken from GPS for example). Right-clicking on these arrow will give the actual heading and speed for the current.



Below here is a table of how the arrows are displayed according to the speed of the current.

Speed MIN	Speed MAX	Draw of Tidal Stream	Typical color
0	0.099	Little square	Yellow
0.1	0.99	Little arrow	Yellow
1.0	1.99	Little arrow	Orange
2.0	2.99	Little arrow	Orange
3.0		Little arrow	Red