

**P-Sea Software Co.**  
**PO Box 1390**  
**Morro Bay, CA 93443 USA**

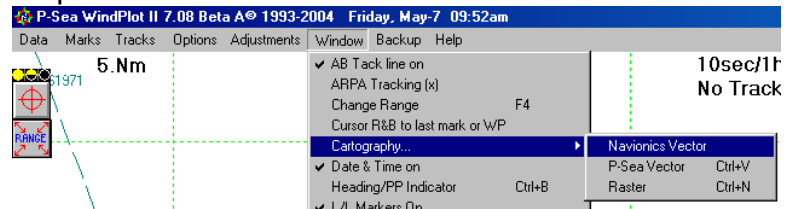
Ph (805) 772-4396 FAX (805) 772-5253  
 E-mail: [faxinfo@p-sea.com](mailto:faxinfo@p-sea.com)  
 Web: [www.p-sea.com](http://www.p-sea.com)

# Navionics Chart Instructions

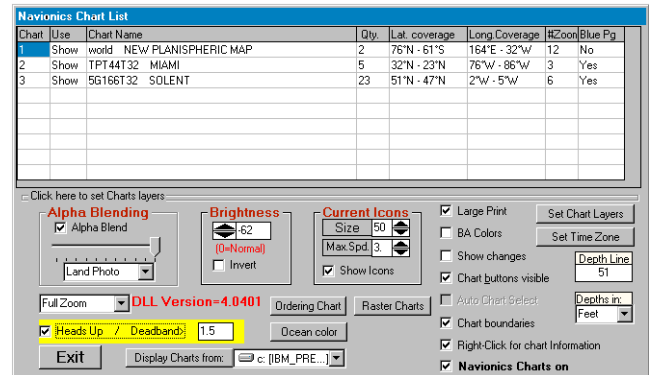
**PC Requirements:** Windows Platform: 2000 pro w/service pack 4 or better. XP & XP pro with service pack 1 or better and Vista. It is advisable to update any windows platforms to the latest versions from the web.

## Navionics Chart Window

The menu path for calling up the “Navionics” chart window is “**Window**” > “**Cartography**” > “**Navionics Vector**” as shown to the right here.



The window to the right here will display. Use this window to change chart drive/path, switch display modes, change ocean colors, show chart boundaries, select layers to be displayed, search for tide stations, current stations and search for other chart objects.



## Set Chart Path

Plug the chart reader in the chart and plug the reader into a USB port **prior** to starting P-Sea WindPlot. You should get a light on the reader when it is plugged in. That should be all you need to install and display the Navionic charts except for turning them on and off in WindPlot. **CAUTION:** Do not unplug the chart or reader while P-Sea WindPlot is running.

If you do not see any charts in the list and you have the reader and chart plugged in you can try and manually set the chart path. There are two ways to do this, either manually or you can do an automatic search.

## Manually setting charts:

First, find the drive letter to the drive letter of the USB card reader by opening *My Computer* to see what drive the USB card reader is on. Opening each drive larger than “C” and look for the charts to be listed (They will end in “.NV2”) then set the drive letter in the Navionics chart list to the same. The charts will only list if you get the correct drive letter. If they do not list and your are sure it is the correct drive letter then please note that there should be 3 drive letters associated with the USB card reader. If you do not see 3 drive letters then most likely your computer will not display the charts and you will probably need to put the latest Windows updates in the computer.

## Automatically setting charts:

Click the “*Display Charts from*” button to call the chart file search window. You will be presented with the question “*Automatically search for charts?*”. Click “*Yes*” to search automatically (Click “*No*” if you want to manually set the path). Click the “*Search Now*” button to start searching for charts. This may take a few minutes, when it is finished you will be presented with all chart files it has found. Carefully look over the list of charts for any one of the charts you want to display and click on it to select that chart path (Hint: it should start with a drive letter higher than “C”). Then click the “*Open*” and the charts should list.

**Auto Chart Selection** check box  Auto Chart Select

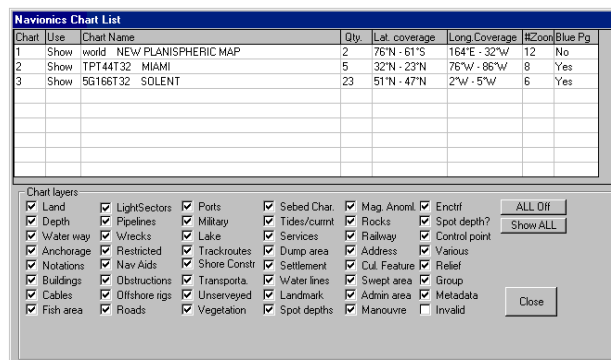
Now that you have charts loaded you should set them to display automatically. Bring up the Navionics chart list (Menu "Windows" then "Charts/Cartography" then "Navioinics Vector Chart" or press "Ctrl. And "V" keys at the same time). Click the "Auto Chart Select" box so that it is checked. You will need to exit the program and restart WindPlot then turn Navionics charts back on. Sometimes the first time you do this will cause P-Sea WindPlot to crash. In that case you will need to start WindPlot and turn Navionics charts back on again. It will do this only once the fist time you turn on the auto-chart selection. From then on the chart will automatically switch when you pan from one area to the next.

**Show Changes** check box  Show changes

The first thing to check is if you want the chart in the background to update for each time you make any changes to the Navionics chart list. Just click the *Show Changes* check box so that it is marked if you want changes to happen in the background.

**Chart Layers** button

Since Navionics chart are vector type you can select what chart objects you to show. Chart objects are items like buoys, depth contours, land and so. Bring up the Navionics Chart List (Ctrl-V) and click the "Set Chart Layer" button. The picture to the right here will appear that lists all items you can choose to display or not by checking the ones you want turned on. Click the "Close" button to change back to the normal chart list.



**Large Print** check box  Large Print

There are two sizes of print and other chart objects. Navionics comes up with normal size by default. If you want the print and other chart objects to appear larger then click the "Large Print" check box so that it is marked.

**BA Colors** check box  BA Colors

There are two chart display schemes, US and BA (British Admiralty). US mode is the default. Just click the *BA Colors* check box to display BA type display scheme.

**Chart Buttons Visible** check box  Chart buttons visible






When this item is checked you will see a group of buttons in the lower-left of the plotter screen when you touch the mouse arrow against the left side of the computer screen. The left-most button will call this Navionics chart list. Then next button switches between day and the two night display modes, reverse color and all red. The next two buttons that look like small worlds scale the chart ( most times) in and out. The next pad lock button to lock the program on a raster chart but does nothing for Navionics charts. The green world button call up the world chart and the last button starts the chart finder program.

**Chart Boundaries** check box  Chart boundaries

Check this box to have the charts outlined in red when you zoom out.

**Right-Click for chart information** check box  Right-Click for chart Information

Most of the objects (buoys, lights, markers and so on) have hidden information on them. Check this box and then you can get information by clicking on them when the Navionics charts are displayed and the information will appear on the plotter screen in different manners depending on the object you are clicking on. This will disable the right mouse button from making marks if you are using it for that. A "T" in a diamond  represents a tide station and you can get tidal information by righ-clicking on it. A "C" in a diamond  represents a current station. Click on it to get water currents and direction of the current. Panoramic photo icons are in the shape of green cameras facing the direction of the photo . Charts has to have what is called "Blue Pages" in order to have any of these three objects. Which charts has blue pages shows up in the last column of the Navionics chart list. Panoramic Photos are only on Platinum charts.

**Heads Up Mode** check box  Heads Up / Deadband> 1.5

The default map orientation is North Up. In that mode moving up on a map is always north and the boat icon rotates when heading changes. If you check the “*Heads Up*” check box then the charts will rotate and the boat icon remains pointing up. In this mode it is a little easier to look and find a land mark as you simply look in the same direction as it is displayed on the chart. However, the computer must rotate all chart data for each heading change and this can slow things way down. You will notice a white box appear next to the check box when it is checked and it is labeled “*Dead Band*”. This dead band is the number of degrees of change required before the chart and data is rotated. If you enter 5 degrees for example, you can move 2.5 degrees right or left and the chart will not rotate. If you are going straight and the chart rotates all of the time then increase this amount. Too large an amount and you would be better off taking it out of heads up mode.

**Zoom Level** One Zoom

There is a zoom control drop down box to control the level of zoom. Choices are; *None*, *One Zoom* and *Full Zoom*. Normally, you should leave it on *Full Zoom* to gain as much control over ranges as possible.

Depths in:  
Feet

**Depth Units**

The charts can display spot soundings and depth curves in either Feet, Fathoms or Meters. To change depth units just click on the arrow button located below the *Depth in:* label in the Navionics chart list and select the desired depth unit by clicking on in the list that will appear.

Depth Line  
51

**Depth Line**

Enter a number here where you want to have the water depth change in color. The value entered here will be used to color the depths up to the closest depth curve on the chart that matches (but may not match exactly) the depth you enter. Enter 0 to return the chart to normal depth shading.

**Brightness**

You can change the brightness of the chart using the “*Brightness*” box on the Navionics chart list. Brightness levels are -250 (total darkness) to +250 (total lightness). If you leave it at zero, the chart is presented normal as it is drawn by the Navionics software and takes less time to draw.



**Ocean color** button

Ocean color

Click this button to set the default chart background color that shows up when chart coverage ends. When you click it you just click on the color you want from the color window, usually you will want a blue hue.

**Blue Pages**

The rest of the features described below will depend on the type of chart and may not be present. If you look at the charts listed you will see a category at the right side of the list is “*Blue Pages*”. The chart must have this column listed as Yes in order to do the following features.

**Set Time Zone**

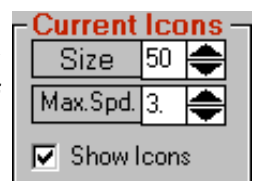
Set Time Zone

Click this button to set the Time Zone that you are in. It is used for getting the proper times for predicting tides, currents, moon and sun phases. Just enter the time offset from Greenwich mean time in hours.

**Current Icons**



Current symbols show up as “C”’s with a diamond box around it. You can get current info by right-clicking on it provided you have that option activated. You can also have a arrow appear on the screen that visually points the direction and shows the speed by how much of the arrow is green and red. The faster the current the more red the icon is. This is turned on when the “*Show Icons*” check box is checked in the Navionics chart list “*Currents Icons*” box. You can also set the size of the icons and the maximum speed of the red/green speed indicator. Just click the up/down arrows or enter a value.



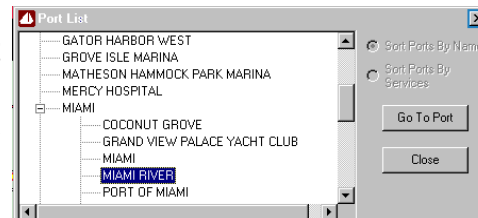
## Chart Info button

4

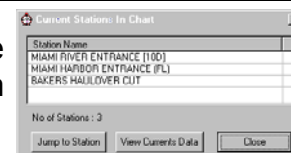
Click this button to search the current chart that is displaying on the plotter screen (one must be displayed at the time this is clicked) for Tide stations, Current stations, ports & port operations. Click the *Chart Info* button and the panel shown to the right here will appear.



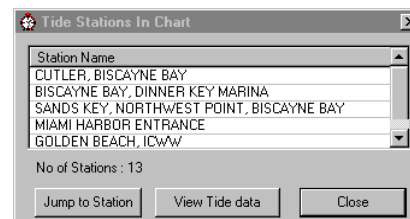
If you click on **Port List** you will get a list of all ports and port operation objects as shown here to the left. Use the scroll bar to find the port or port object you want to see and click on it then just click the *Go to Port* button. The list will disappear and the plotter will pan to the location of the port object you clicked on.



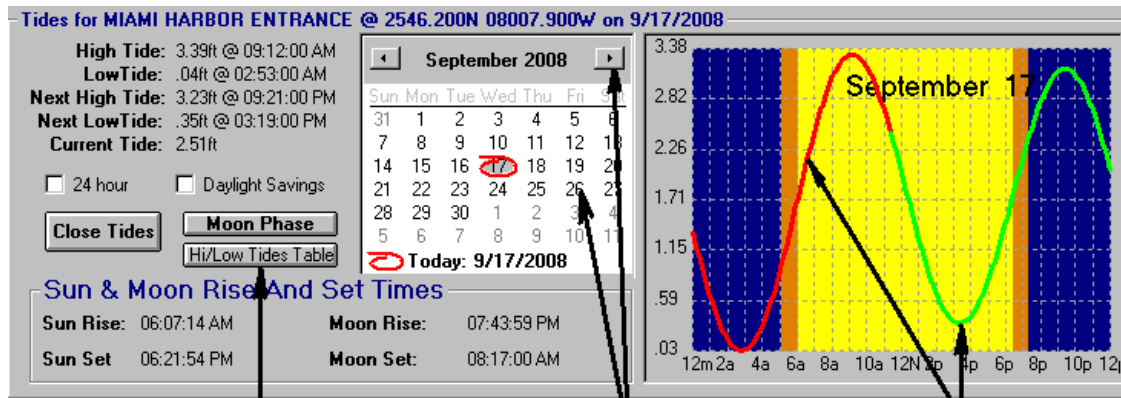
If you click on **Current List** button then you will get a list of the current stations in the area. If you click on one of the stations that are in this list you have the choice to view the current information by clicking on the *View Current Information* button or to view where on the chart the station is by clicking the *Jump To Station* button.



If you click the **Tide List** button then you will get a list of all of the tide stations in the area. Click on one of the tide stations in the list to select one then you can click the *Jump to Station* button to have the chart panned and centered on the tide station's location or click the *View Tide data* button to call the tide table shown below.



The tide window here shows the current high/low tides for the day. A graph shows what the tide will be doing for the days with the current tide shown where the red line turns to green. Place your mouse arrow anywhere on the graph to get the tide and time at the point. Click on the calendar to view the tide data for different day.



Click this button to get a complete table of the highs & lows for the month or print out a calendar

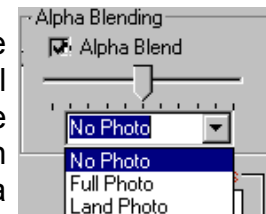
Click on any day or month to view the tide data for that day

Place the mouse arrow anywhere on the graph to get the tide height/time for that point

Click the **Hi/Low Tide Table** button to get a printout of all the high and low tides for the month. Then you can click the **Click to Print Table** button to print a calendar of highs and lows for the month to a external printer.

## Navigational Photo Overlays

The Platinum series of charts have the option to overlay navigational aerial photos into the vector charts. If you wish to mix the navigation photos you must first pick out if you want "Full Photo" or just "Land Photo". The do just what they say, the *Full Photo* shows all of the available photo overlaid on the Navionics vector chart where as the *Land Photo* selection will just show the land portion overlaid on the cart with one exception. When you have a value entered in the *Depth Line* the photo will extend past the shore line a little.



The *Alpha Blend* slider will change the blend between the vector and photo overlay. The left side show more vector and moving the slider towards the right overlays more of the navigation photo.